

# CAPNCM



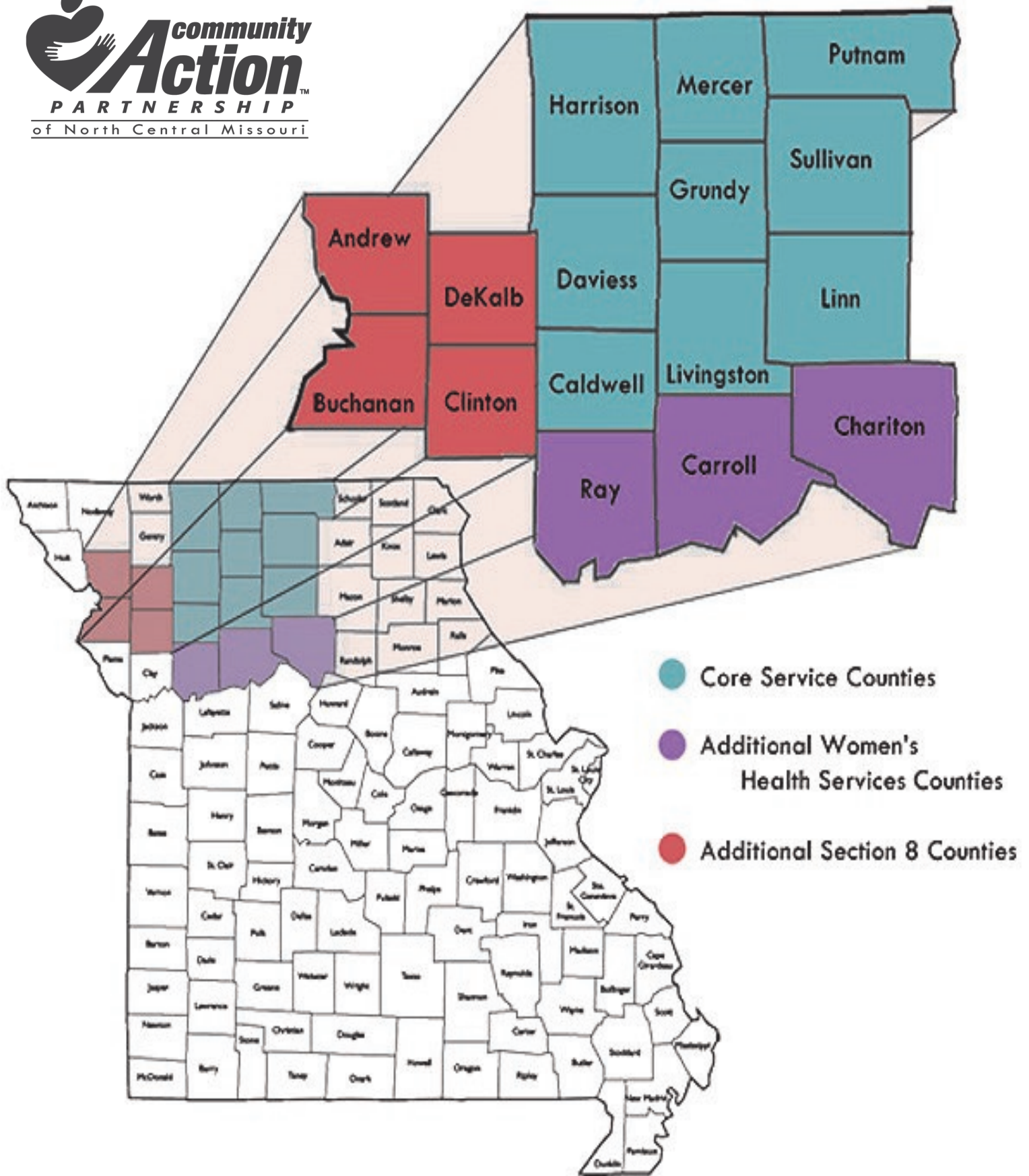
Serving the  
Green Hills region  
since 1965!



# 2019 Annual Report



Community Action Partnership  
of North Central Missouri  
1506 Oklahoma Ave / Trenton MO 64683  
855.290.8544 / 844.503.1872  
[www.capncm.org](http://www.capncm.org)



# CAPNCM Service Area

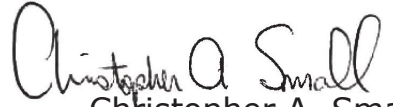


# Welcome *to the 2019 edition of our annual report.*

Each year, the Community Action Partnership of North Central Missouri highlights our efforts through this publication. But like any publication, it is only a slice of the people, programs & services that seek to help those neediest in our region find a pathway to better living. We at CAPNCM connect people in need to resources available within our communities & help those people achieve self-sufficiency.

Within our nine county primary service area, we continue to assist those in need through quality programs. We strive not to be an agency that gives a “hand out,” but rather a “hand up.” The needs of those from low-income families are every-changing, & we here at CAPNCM work tirelessly to evaluate & modify our efforts based upon those changing needs. However, working to address the needs of those in poverty is never an isolated endeavor, but a collective effort of everyone in the communities we serve- businesses; faith-based organizations; health departments; food pantries; & partnering non-profits! Those that give their time & resources help to increase opportunities for more clients towards sustainable, productive lives.

Year in & year out, we strive to spend our available resources with the utmost efficiency. For every dollar we received in fiscal year 2019, we spent 96 cents on direct programming to our counties across the Green Hills region. We pride ourselves on a long-standing tradition of sound financial practices; a dedicated & passionate staff; & a quality Board of Directors that believe in our core mission! We look forward to further engaging our communities & expanding volunteer opportunities throughout 2020. It takes a total team effort to serve those most in need across our nine counties. For fifty-five years, CAPNCM has been a vital resource to those in our rural communities. We look forward to serving those in need for many more years to come. Wherever there’s poverty in the Green Hills region, we’ll be there to provide a helping hand!

  
Christopher A. Small,  
CAPNCM Executive Director

## Our People

### Administration

Christopher Small, Executive Director  
Harry Belvel, Finance Director/IT  
Jennifer Farmer, Administrative Services Manager  
Misty Mathews, Receptionist

### Housing Assistance

Debbie Dinsmore, HA Director  
Christina Taylor, HA Coordinator  
Patrice Robertson, HA Inspector

### Women's Health Services

Jenny Dean-Batson, Director/Nurse Practitioner  
Vicky West, Licensed Clinic Supervisor/ Education Coordinator  
Felicia Terhune, Office/Records Manager  
Peggy Mathews, Systems Coordinator

### Community Services

Sherry Hoerrmann, CS Director  
Debbie Cribb, CS Coordinator  
Chasidy Boman, CS Representative  
Ronda Simpson, Energy Services Representative  
Audrey Reeter, Energy Services Representative  
Gene Schelker, Offender Empowerment Program Case Manager

### Housing Development / Weatherization

Russell Reeter, Director  
Alicia Roy, HD/WX Coordinator  
Mike Eckert, Maintenance Coordinator  
John Woodring, HD Crew Leader  
Tom Cunningham, HD Crew Member  
Bob Baker, WX Crew Leader  
Donnie Fountain, WX Crew Member

# Agency History

On August 20, 1964, President Lyndon B. Johnson signed the Economic Opportunity Act of 1964 into law. This act consisted of social programs to promote the health, education, & general welfare of the poor, & paved the way for what would eventually be known collectively as "Community Action".

Since it's inception in 1965, Community Action Partnership of North Central Missouri (CAPNCM) has been a 501(c)(3) private, non-profit organization focused on assisting low-income individuals/families in their efforts to become more self-sufficient. We provide services & programs designed to help improve financial, physical, & mental standing, all while motivating people to learn how to better help themselves. CAPNCM serves the northern Missouri counties of Caldwell, Daviess, Grundy, Harrison, Linn, Livingston, Mercer, Putnam, & Sullivan. In addition, our agency provides limited women's health services to Carroll & Ray counties, & additional Section 8 (HUD) housing assistance services to Andrew, Buchanan, Clinton, & DeKalb counties.

In 1965 numerous county-specific agencies were formed as a result of the Economic Opportunity Act. The Livingston County Human Resources Development Corporation was created to serve the residents of Livingston County, & by 1967, that non-profit had grown to also provide services to Linn, Daviess, & Caldwell Counties.

Harrison County Economic Opportunity, Inc. formed in 1965 as well, to serve the residents of Harrison County. Green Hills Area Human Resources Development Corporation, also opened its doors in 1965 to serve the residents of Grundy, Mercer, Putnam, & Sullivan counties. By 1967, these two agencies had merged.

In 1969, these small, county specific agencies joined forces as Green Hills Human Resources Corporation, serving nine Missouri counties under this name for nearly 23 years. In March of 1992, the Board of Directors recognized a need to identify as a "Community Action Agency", & moved to change the name to Green Hills Community Action Agency.

With the need for consistent messaging across the entire network about the value & role of each Community Action Agency, the Board of Directors, once again approved another name change in June of 2015. On October 1, 2015, Green Hills Community Action Agency (GHCAA) began "doing business as" (DBA) Community Action Partnership of North Central Missouri (CAPNCM), creating alignment with the nationwide movement that is Community Action.



Community Action Partnership of North Central Missouri

CAPNCM endeavours to make the community aware of the issues encountered by low-income families, & serves as an advocate for the less fortunate by strengthening communications, along with planning & coordinating programs designed to serve the low-income community. For nearly 6 decades, CAPNCM has been giving a hand up to people who seek to break the bonds of poverty.

[www.capncm.org](http://www.capncm.org)



# Board of Directors

## Chair

*Allan Seidel*

## Vice Chair

*Kelley Dowling*

## 2nd Chair

*Gerald Owings*

## Secretary

*Joyce Eads*

## Treasurer

*Julie McFee*

Poppy Dockray  
 Joshua Vance  
 Larry Adams, Jr.  
 Joe Brinser  
 Rick Smith  
 Rex Ellis  
 David Mapel, Jr.  
 Brenda Crawford  
 Sarah Maloney  
 Shane Grooms  
 Shane Cox  
 Rex Hibler  
 Gerald Owings  
 Kenneth Purkey  
 Dianne Hendee  
 Jackie Morris  
 Tracy Wheeler  
 Marvin Meeker

# Financials

## Assets

Cash on Hand	47.55
Cash in Bank - Unrestricted	732369.26
Cash in Bank - Restricted	370298.65
Total Cash	1102715.46
Certificates of Deposit	150000.00
Receivables, Net	80035.35
Promises to Give, Current Portion	44687.02
<b>Inventory</b>	<b>722.72</b>
<b>Total Current Assets</b>	<b>1378160.55</b>
Capital Assets, Net	1638806.20
Promises to Give, Long Term Portion	263627.69
<b>Total Assets</b>	<b>3280594.44</b>

## Liabilities & Net Assets

Current Liabilities	
Accounts Payable	15578.86
Accrued Payroll	14248.41
Accrued Payroll Withholdings	10979.92
Accrued Annual Leave	47895.93
Tenant Security Deposits	28335.00
Advances from Grantor	121530.48
<b>Total Liabilities</b>	<b>238568.60</b>
Unrestricted Assets	819378.46
Temporarily Restricted Assets	2222647.38
Total Net Assets	3042025.84
<b>Total Liabilities/Net Assets</b>	<b>3280594.44</b>

# Community Services

All of the following programs are made possible by the Community Services Block Grant (CSBG) Program, which provides assistance to Community Action Agencies for the reduction of poverty, the revitalization of low-income communities, & the empowerment of low-income families & individuals in rural & urban areas to become fully self-sufficient.

## **Direct Client Services**

Our Direct Client Services funds are set aside to help clients through an immediate emergency situation. These funds are a service that can help clients during an unexpected crisis. During FY19, Direct Client Services were used for rent & utility deposits, gas to get to/from doctor appointments, life-saving prescription medications, dental work, & eyeglasses.

## **Elderly & Disabled Services**

Elderly Services funds are accessible only to clients 65 or older. This fund supplements our standard Direct Client Services in order to help our elderly population with additional services such as wheelchair ramps. As a part of this program, special funding was also provided for the elderly in the form of a limited number of infrared heaters, fans, & AC units.

## **Offender Empowerment**

The Offender Empowerment Program seeks to assist offenders in finding & retaining gainful employment & secure housing, helping them to once again become productive members of society. Program participants are referred to our office by Probation & Parole, & each client works with staff to develop an individualized case management plan, allowing customized supports to be put in place & encouraging the best path to success.

## **Community Partnership Fund**

The Community Partnership Fund provides up to \$500 to selected organizations within our service area. This program is designed to provide funding & assistance to groups, organizations, & companies that serve low-income individuals and/or families. Our hope is these funds will utilize the strengths & diversity of our community partners to build strong communities.

## **Poverty Simulations**

These simulations are a unique opportunity to help the community understand what life is like for those living in poverty. Many of the individuals & families in our nine (9) county service area face poverty every day. Participants role play in the lives of low-income families. Family scenarios are given out to participating groups & each family is given time to seek services & support, obtain financial assistance, & simply decide how to spend what little money they have to survive.



# Energy Services

The mission of the Low-Income Home Energy Assistance Program (or LIHEAP for short) is to help low income households in meeting their home energy needs. Thousands of families contact CAPNCM for help paying past-due heating & cooling bills. We help households avoid disconnections, pay off balances, afford propane, & even buy wood or pellets for their stoves. We also offer a limited number of air conditioners and/or infrared heaters to elderly or disabled persons in dire need through this funding. LIHEAP offers basic funds for Energy Assistance (EA), as well as Energy Crisis Intervention Program (ECIP) funds for households with disconnection notices for their utilities.

# Housing Development / Weatherization

CAPNCM works in partnership with the state & various other community resources to assess our area's greatest needs, with safe & affordable housing always appearing high on that list. CAPNCM's Housing Development & Weatherization department offers several programs to help families find housing.



### **Weatherization**

The Weatherization Program seeks to reduce energy costs for low-income households by increasing the energy efficiency of the homes while ensuring the resident's health & safety. Weatherization offers minor energy saving measures, such as weather-stripping around doors & windows, but also takes the "whole house weatherization" approach that analyzes the building as a whole: exterior, heating & cooling systems, & electrical systems through the completion of an energy audit.

### **Home Repair**

The goal of the Home Repair Opportunities Program, funded by the Missouri Housing Development Commission, is to serve as an aid to help preserve older homes in our area. The program also assists families to remain in their homes for a greater number of years by keeping the homes in livable condition, longer. The Home Repair Program focuses on lead-risk reduction, emergency repairs, weatherization, & accessibility.

### **Rental Home Management**

Rental Home Management Program provides safe & affordable quality rental houses & apartment units to low-income families & single people. CAPNCM currently manages over 100 rental units (both stand-alone homes & apartment complexes)!

## **Housing Assistance**

The Housing Choice Voucher Program exists to assist low-income families, the elderly, & the disabled in affording decent, safe, & sanitary housing in the private market. Housing Assistance is provided on behalf of the family or individual, allowing participants to find their own housing - including single-family homes, townhouses or apartments. Homes are inspected & reviewed regularly to ensure they continue to meet program guidelines.

The Public Housing Agency (PHA) determines eligibility based on gross annual income & family size. The maximum housing assistance amount is generally the lesser of the payment standard minus 30% of the family's monthly adjusted income or the gross rent for the unit minus 30% of monthly adjusted income.

Since the demand for housing assistance often exceeds the limited resources available to HUD & the local housing agencies, long waiting periods are common. In fact, a PHA may close its waiting list when it has more families on the list than can be assisted in the near future. *Our Waiting List could be anytime up to one (1) year.* The PHA will serve those from the wait list in preference order.



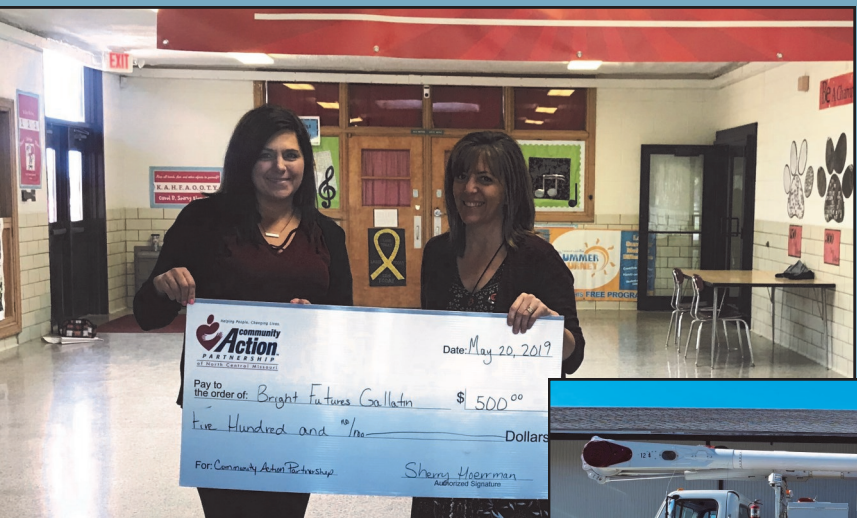
## **Women's Health Services**

Women's Health Services hosts daytime & evening clinics across 10 counties, which are open to all people, regardless of financial situation, age, race, or gender. At these clinics, women can receive monthly birth control pills, annual exams, family-planning information, & other related services, like STD screening & general reproductive health care. All clinics are income-based & use a sliding fee scale, offering complete privacy & attentive care for any number of reproductive issues. Men are welcome to attend clinic as well, with several services targeted toward male reproductive issues & their treatment.

# **Our Programs**



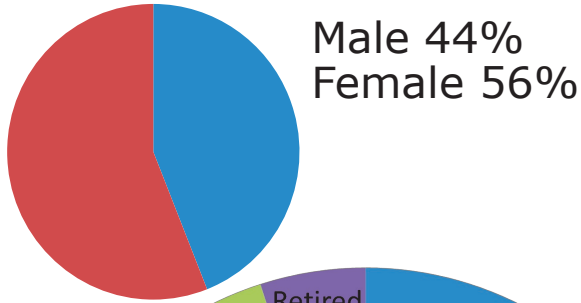
# Photo Gallery



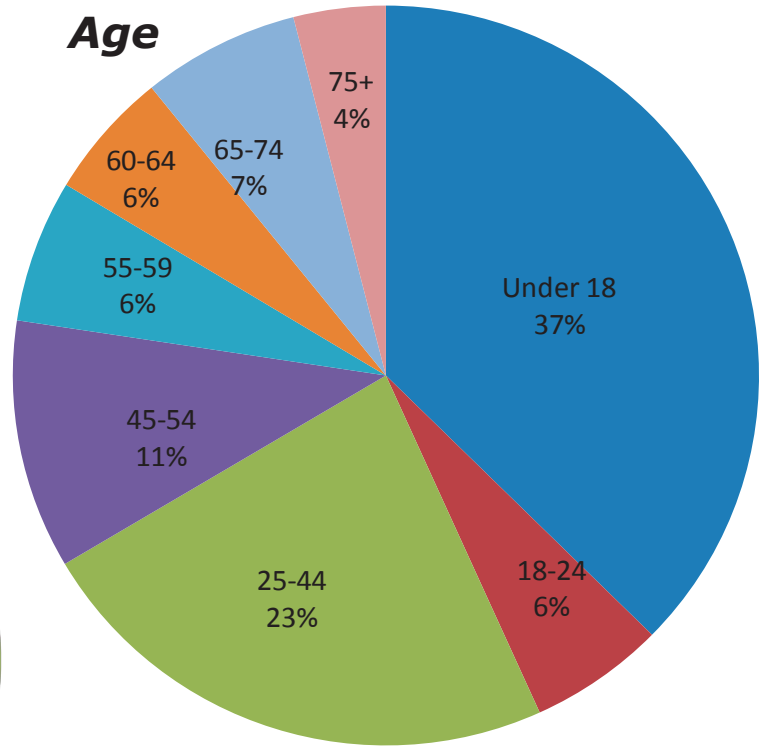


# Client Demographics

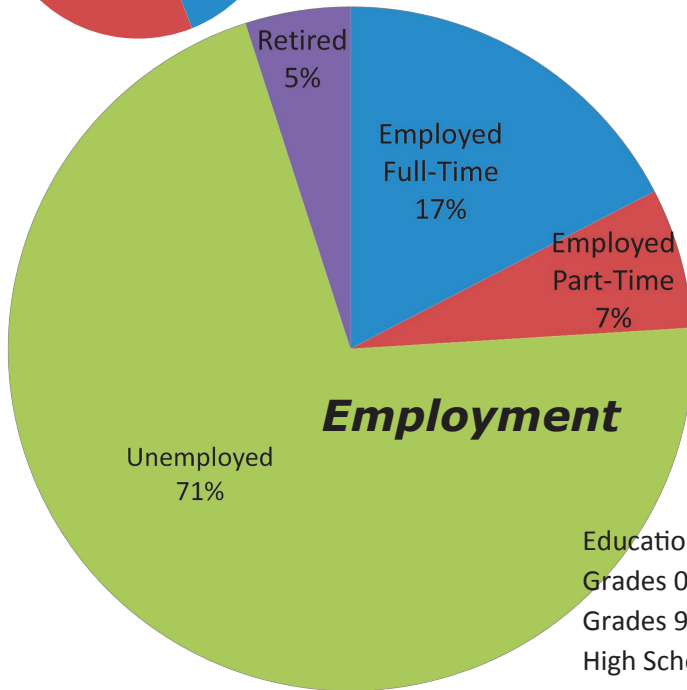
## Gender



## Age

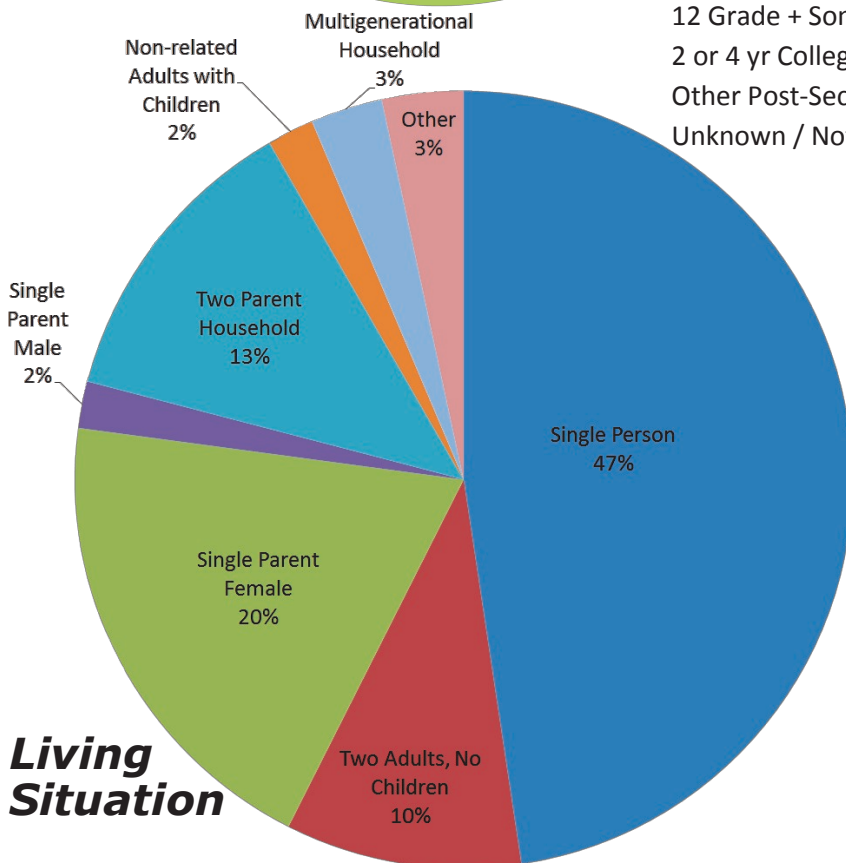


## Employment

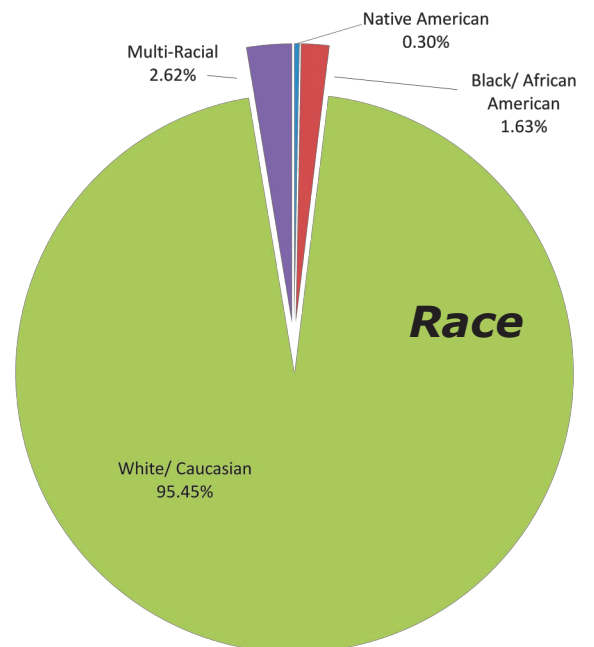


## Education

Education Level	Ages 14-24	Ages 25+
Grades 0-8	133	46
Grades 9-12/Non-Graduate	84	197
High School Graduate/Equivalency Diploma	46	935
12 Grade + Some Post Secondary	1	15
2 or 4 yr College Graduate	0	45
Other Post-Secondary Grad	0	2
Unknown / Not Reported	263	808



## Living Situation



## Race

### **1 Central Missouri**

#### **Community Action (CMCA)**

Counties: Audrain, Boone, Callaway, Cole, Cooper, Howard, Moniteau, Osage  
(573) 443-8706  
807B North Providence Road  
Columbia, MO 65203  
[www.showmeaction.org](http://www.showmeaction.org)

### **2 Community Action Agency of Greater Kansas City (CAAGKC)**

Counties: Clay, Jackson, Platte  
(816) 358-6868  
6323 Manchester  
Kansas City, MO 64133  
[www.caagkc.org](http://www.caagkc.org)

### **3 Community Action Agency of St. Louis County (CAASTLC)**

County: St. Louis County  
(314) 863-0015  
2709 Woodson Road  
St. Louis, MO 63114  
[www.caastlc.org](http://www.caastlc.org)

### **4 Community Action Partnership of North Central Missouri (CAPNCM)**

Counties: Caldwell, Daviess, Grundy, Harrison, Linn, Livingston, Mercer, Putnam, Sullivan  
(660) 359-3907  
1506 Oklahoma Avenue  
Trenton, MO 64683  
[www.capncm.org](http://www.capncm.org)

### **5 Community Action Partnership of Northeast Missouri (CAPNEMO)**

Counties: Adair, Clark, Knox, Scotland, Schuyler  
(660) 665-9855  
215 N. Elson Street  
Kirksville, MO 63501  
[www.capnemo.org](http://www.capnemo.org)

### **6 Community Action Partnership of St. Joseph (CAPSTJOE)**

Counties: Andrew, Buchanan, Clinton, DeKalb  
(816) 233-8281

817 Monterey Street  
St. Joseph, MO 64503  
[www.endpov.com](http://www.endpov.com)

### **7 Community Services, Inc. of Northwest Missouri CSI**

Counties: Atchison, Gentry, Holt, Nodaway, Worth  
(660) 582-3113  
1212B South Main  
Maryville, MO 64468  
[www.communityservicesinc.org](http://www.communityservicesinc.org)

### **8 Delta Area Economic Opportunity Corporation (DAEOC)**

Counties: Dunklin, Mississippi, New Madrid, Pemiscot, Scott, Stoddard  
(573) 379-3851  
99 Skyview Road  
Portageville, MO 63873  
[www.daeoc.com](http://www.daeoc.com)

### **9 East Missouri Action Agency (EMAA)**

Counties: Bollinger, Cape Girardeau, Iron, Madison, Perry, St. Francois, Ste. Genevieve, Washington  
(573) 431-5191  
403 Parkway Drive  
Park Hills, MO 63601  
[www.eastmoaa.org](http://www.eastmoaa.org)

### **10 Economic Security Corporation of the Southwest Area (ESC)**

Counties: Barton, Jasper, McDonald, Newton  
(417) 781-0352  
302 South Joplin Street  
Joplin, MO 64802  
[www.escswa.org](http://www.escswa.org)

### **11 Jefferson Franklin Community Action Corporation (JFCAC)**

Counties: Franklin, Jefferson  
(636) 789-2686  
#2 Merchant Dr.  
Hillsboro, MO 63050  
[www.jfcac.org](http://www.jfcac.org)

### **12 Missouri Ozarks Community Action, Inc. (MOCA)**

Counties: Camden, Crawford, Gasconade, Laclede, Maries, Miller, Phelps, Pulaski  
1-800-876-3264  
306 South Pine Street  
Richland, MO 65556  
[www.mocaonline.org](http://www.mocaonline.org)

### **13 Missouri Valley Community Action Agency (MVCAA)**

Counties: Carroll, Chariton, Johnson, Lafayette, Pettis, Ray, Saline  
(660) 886-7476  
1415 South Odell  
Marshall, MO 65340  
[www.mvcaa.net](http://www.mvcaa.net)

### **14 North East Community Action Corporation (NECAC)**

Counties: Lewis, Lincoln, Macon, Marion, Monroe, Montgomery, Pike, Ralls, Randolph, Shelby, St. Charles, Warren  
(573) 324-2231  
16 North Court Street  
Bowling Green, MO 63334  
[www.necac.org](http://www.necac.org)

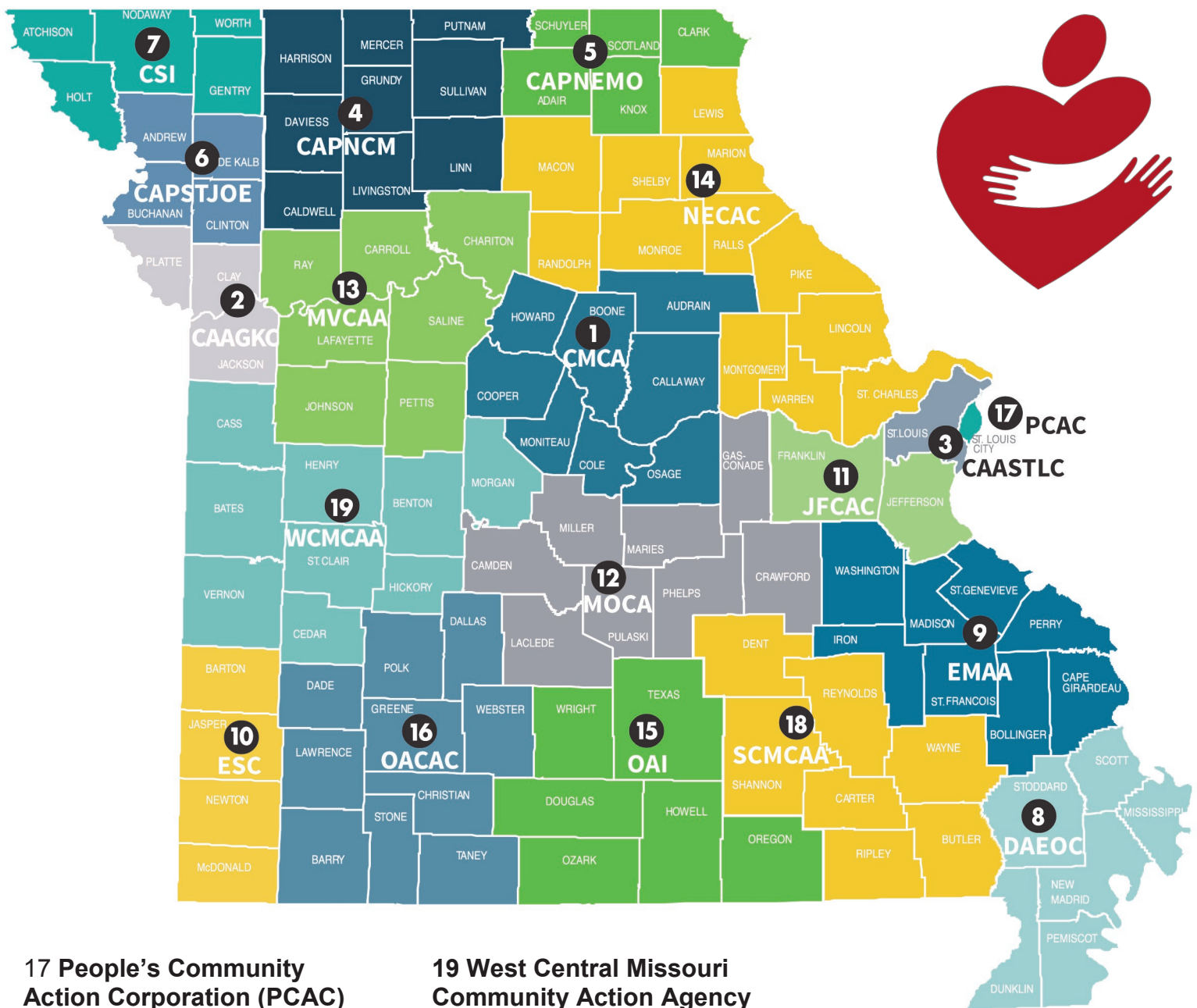
### **15 Ozark Action, Inc. (OAI)**

Counties: Douglas, Howell, Oregon, Ozark, Texas, Wright  
(417) 256-6147  
710 East Main  
West Plains, MO 65775  
[www.oaiwp.org](http://www.oaiwp.org)

### **16 Ozarks Area Community Action Corporation (OACAC)**

Counties: Barry, Christian, Dade, Dallas, Greene, Lawrence, Polk, Stone, Taney, Webster  
(417) 862-4314  
215 South Barnes  
Springfield, MO 65802  
[www.oac.ac](http://www.oac.ac)





## 17 People's Community Action Corporation (PCAC)

**18 South Central Missouri  
Community Action Agency  
(SCMCAA)**

**19 West Central Missouri  
Community Action Agency  
(WCMCAA)**

Each & every one of Missouri's counties are covered by a Community Action Agency. Our agency handles nine core counties, with an additional 4 included under Section 8 Housing Assistance, & 3 more within our Women's Health Services program.

# CAPNCM

---

## PHONE NUMBERS

Toll Free Phone - 855-290-8544  
Local Phone - 660-359-3907  
Service Center - 660-359-6863  
WHS Toll-Free Phone -  
877-611-7600

## FAX NUMBERS

Toll Free Fax - 844-503-1872  
Trenton Local Fax - 660-359-6619  
LIHEAP Local Fax - 660-359-2038  
WHS Fax - 660-359-2855

## WEBSITES

[www.capncm.org](http://www.capncm.org)  
[www.greenhillswomenshealth.org](http://www.greenhillswomenshealth.org)

## OUR ADDRESS

CAPNCM  
1506 Oklahoma Ave  
Trenton, MO 64683

## OUR SERVICE AREA

Serving the Missouri counties of  
Caldwell, Daviess, Grundy, Harrison, Linn,  
Livingston, Mercer, Putnam, & Sullivan; with  
limited services in Andrew, Buchanan, Carroll,  
Clinton, DeKalb, & Ray.

## COMMUNITY ACTION PROMISE

Community Action changes people's lives,  
embodies the spirit of hope, improves  
communities, & makes America a better place  
to live. We care about the entire  
community, & we are dedicated to helping  
people help themselves & each other.

## OUR VISION

CAPNCM envisions a world without poverty in  
which all people have access to necessary  
resources & are treated with dignity.

## OUR MISSION

CAPNCM offers services to individuals to  
become self-sufficient by empowering them  
to obtain the resources needed to build  
strong families & communities.

